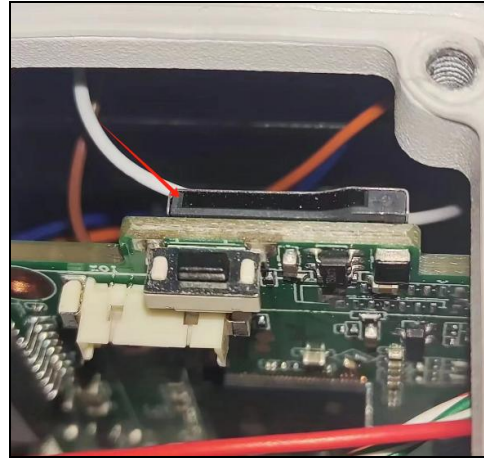
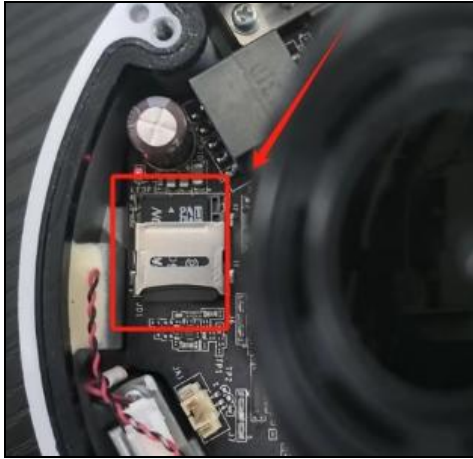


HIKVISION IPC installation hard disk and recording settings

1. Installing the sd card into the camera.



2. Log in to the camera web page.click"Configuration - Storage - Storage-Management".
Select sd card and click Format.

The screenshot shows the Hikvision IPC web interface. The top navigation bar includes 'Live View', 'Playback', 'Picture', and 'Configuration'. The 'Configuration' tab is selected, and the 'HDD Management' sub-tab is active. A red arrow labeled '1' points to the 'Configuration' tab. The left sidebar contains various settings categories, with 'Storage Management' selected, indicated by a red arrow labeled '3'. The main content area displays a table for 'HDD Management' with columns for 'HDD No.', 'Capacity', 'Free space', 'Status', 'Encryption Status', 'Type', 'Formatting Type', 'Property', and 'Progress'. A red arrow labeled '4' points to the first row of the table, which represents the SD card. A red arrow labeled '5' points to the 'Format' button in the top right corner of the table. Below the table, there is a 'Quota' section with several input fields for capacity and percentage settings. A red arrow labeled '6' points to the 'Save' button at the bottom of the page.

<input checked="" type="checkbox"/>	HDD No.	Capacity	Free space	Status	Encryption Status	Type	Formatting Type	Property	Progress
<input checked="" type="checkbox"/>	1	14.73GB	0.00GB	Uninitialized	-	Local	EXT4	R/W	

3. Click"Schedule Settings - Record Schedule", check enable,Selecting the video type and drawing the video timeline

Live View Playback Picture **Configuration**

Record Schedule Capture

Enable 2

Motion X Delete Delete All Advanced 3

	0	2	4	6	8	10	12	14	16	18	20	22	24	
Mon	Motion		Continuous										Motion	
Tue	Motion		Continuous										Motion	
Wed	Motion		Continuous										Motion	
Thu	Motion		Continuous										Motion	
Fri	Motion		Continuous										Motion	
Sat	Motion		Continuous										Motion	
Sun	Motion		Continuous										Motion	

4

Local System Network Video/Audio Image PTZ Event Storage

Schedule Settings

Storage Management

Legend:
Continuous (Blue)
Motion (Green)
Motion | Alarm (Orange)
Event (Purple)