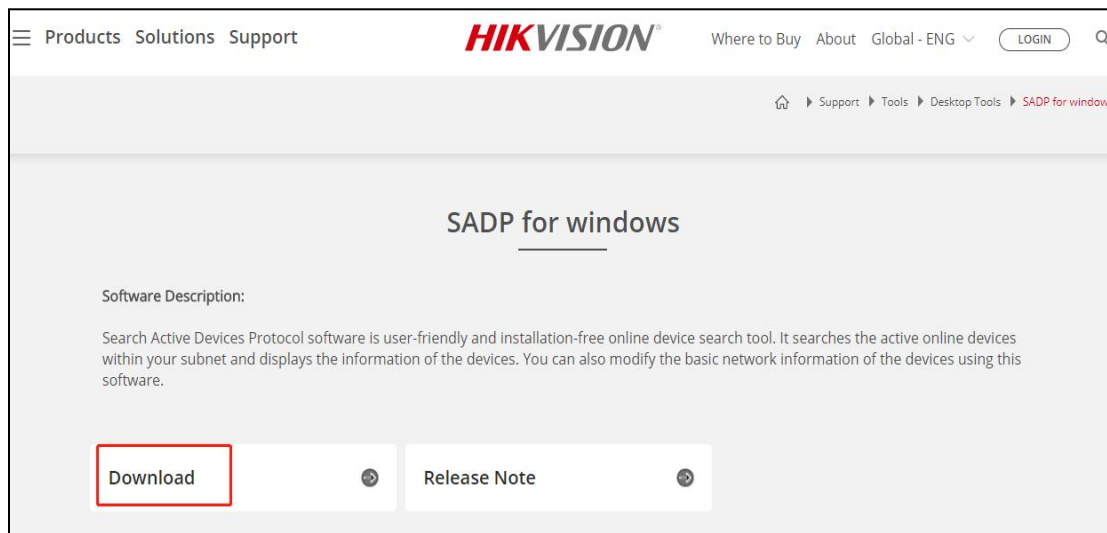


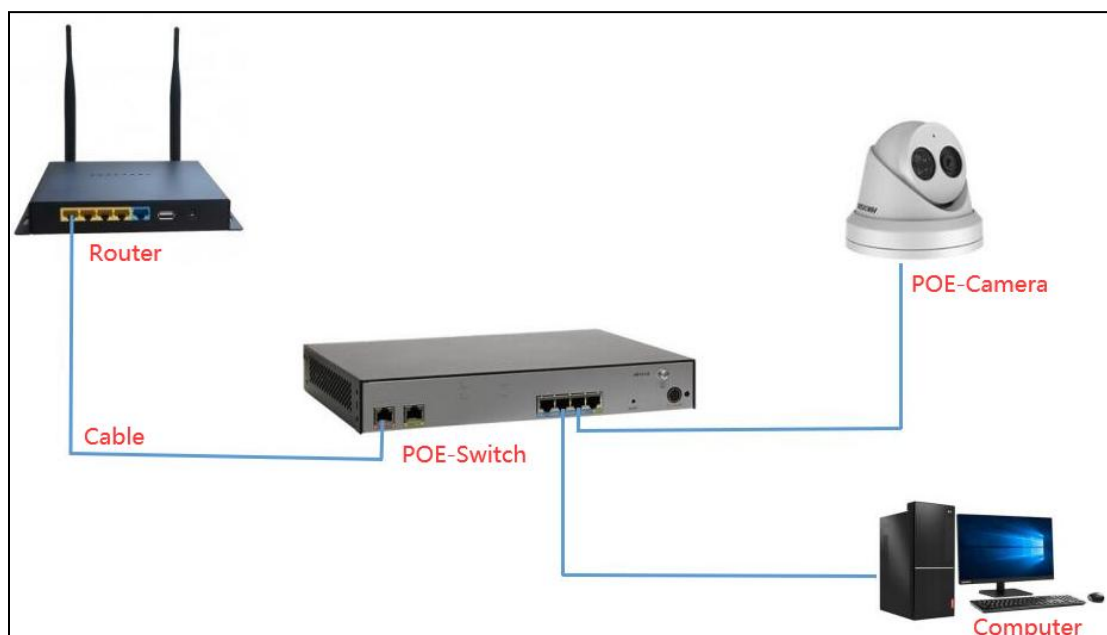
Hikvision NVR connect PG camera

1、 Computer download and install Hikvision "SADP" software tool.

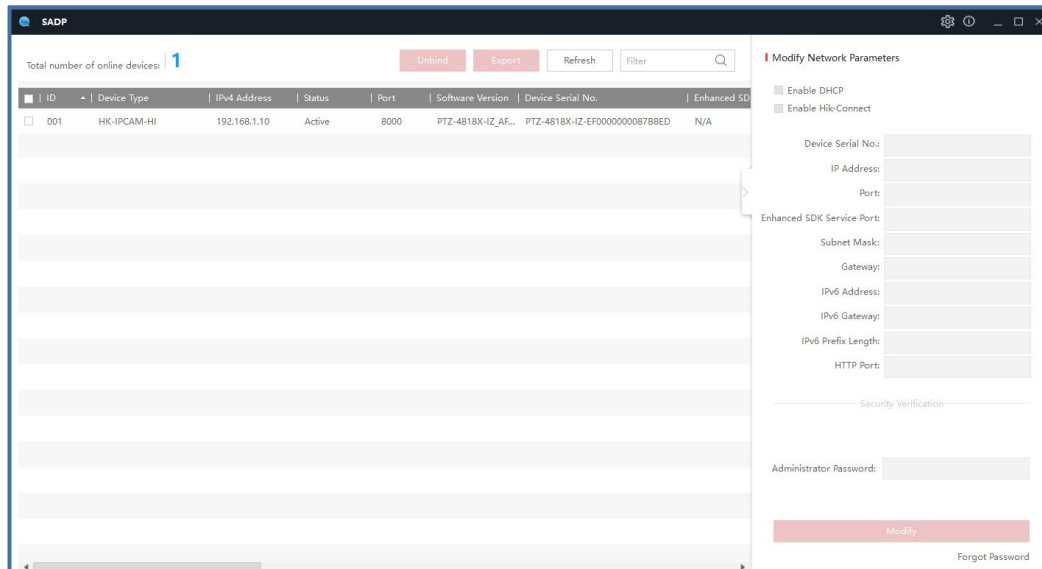


Download : <https://www.hikvision.com/en/search/?q=SADP>

2、 Please keep the computer and camera on **the same LAN**--Please use a network cable to connect, do not use Wifi

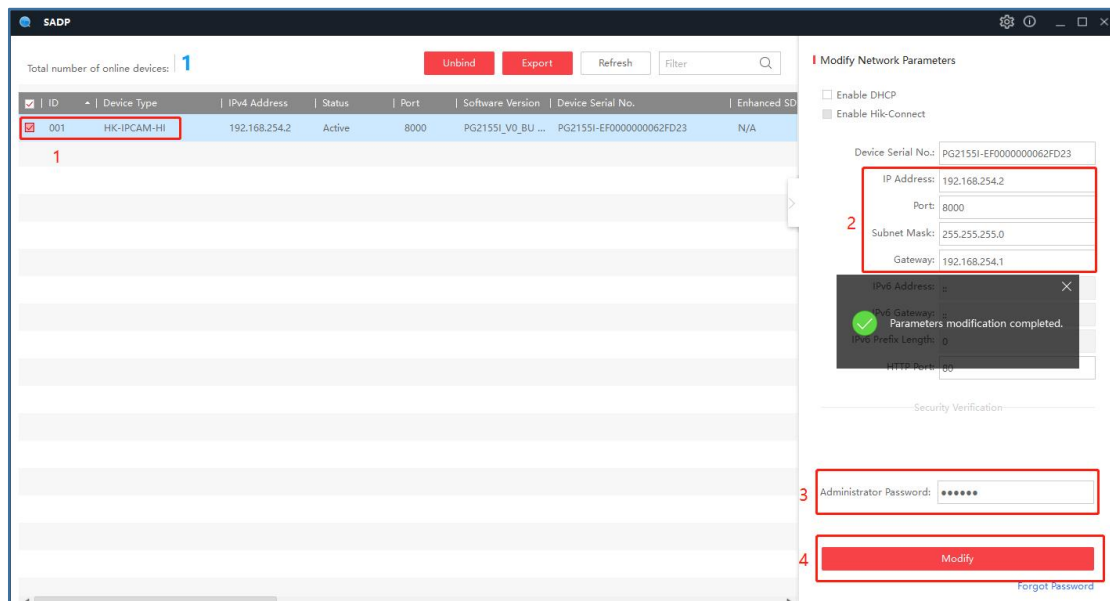


3、Query the IP address of the camera through the search tool;

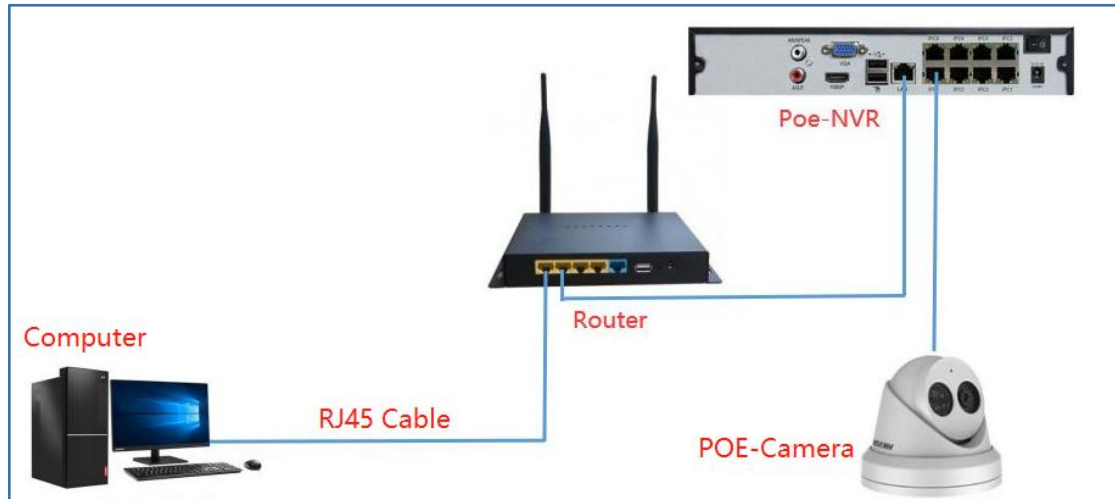


4、Modify camera IP address

- ① Select camera IP address;
- ② Modify the IP address to be an address between 192.168.254.2---192.168.254.254 and the gateway is set to 192.168.254.1;
- ③ Enter the camera password: 123456;
- ④ Select Modify---Parameters modification completed;



5、 Connect the camera to the POE port of Hikvision NVR



6、 Right mouse button--Select Menu --①Configuration--②Camera--③Click Edit--④Choose Manual--⑤Enter 192.168.254.2--⑥Choose ONVIF--⑦Enter IP Camera Password--⑧Click OK

7、 Added successfully--Choose Live View display image:

