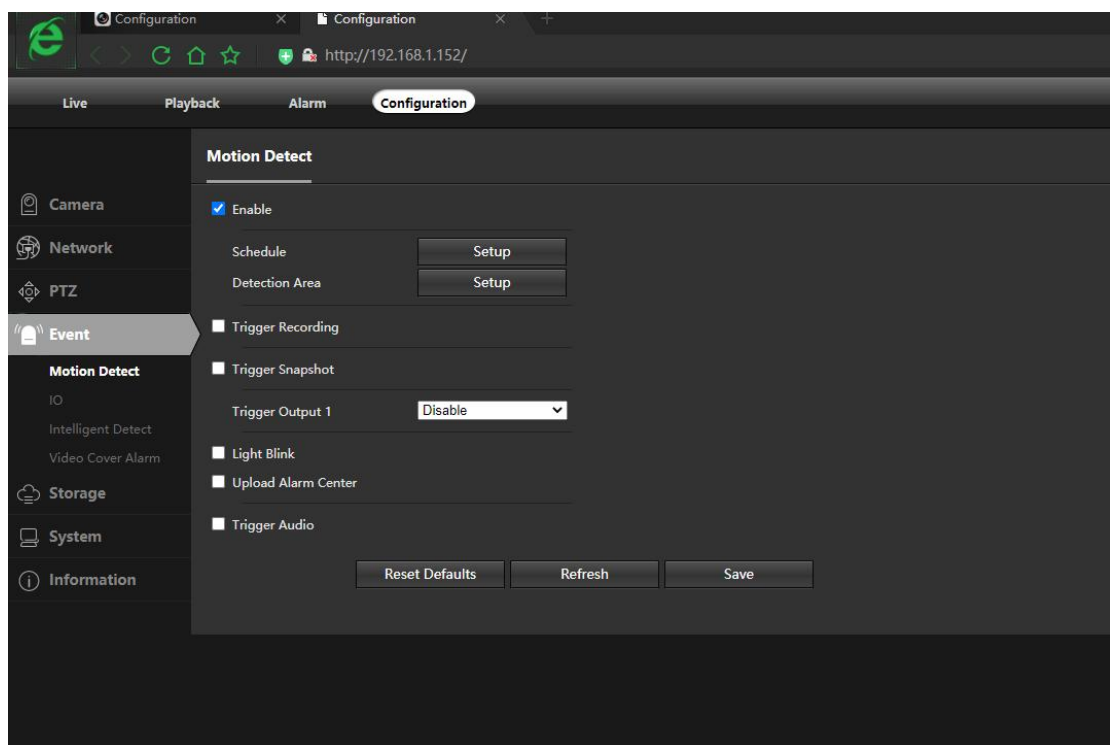
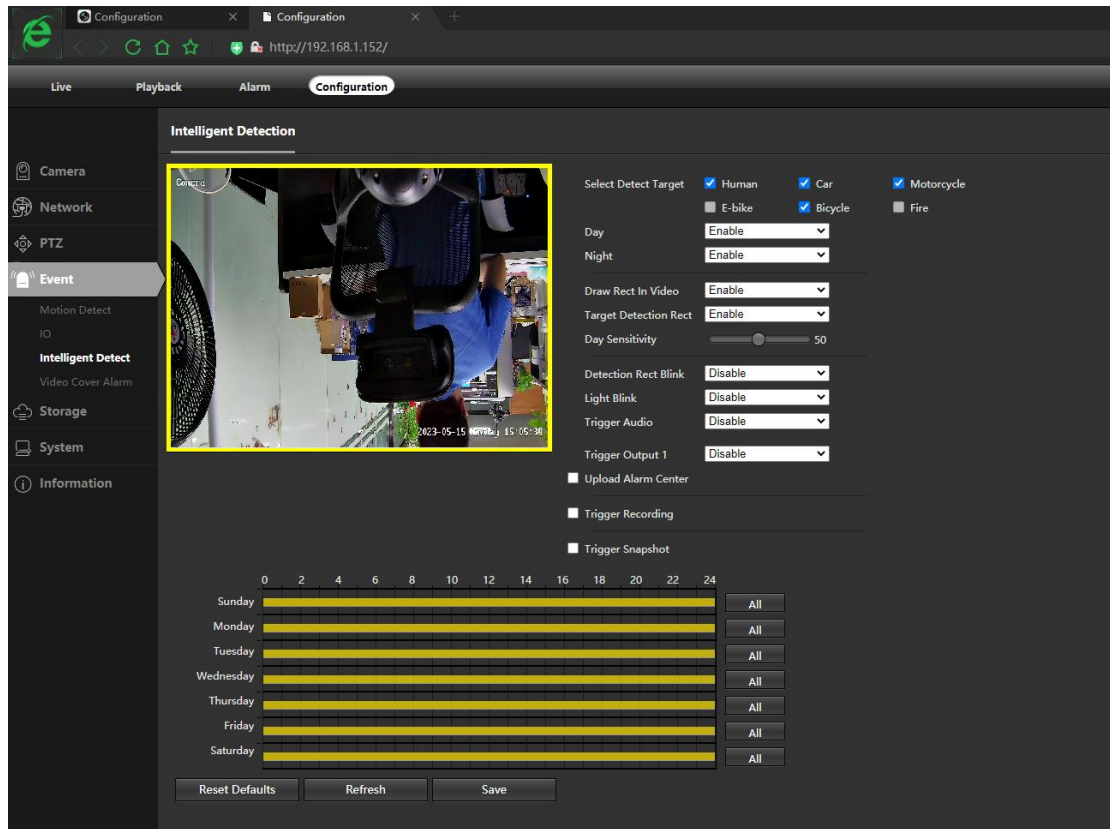


Take Hikvision video recorder as an example:

The camera's human and vehicle detection will only transmit the "motion detection" alarm information to the backend when a person or a car is detected. The video recorder needs to set the linkage method of the motion detection alarm.

Enable human and vehicle detection in the camera:





Recorder Settings:

The recorder contains normal events, not smart events.

The Hikvision protocol and Dahua protocol have the same operation. The alarm action settings are set in the linkage method.

Configuration

http://192.168.1.128/doc/page/config.asp

HIKVISION Live View Playback Picture **Configuration**

Motion Video Tampering Video Loss Alarm Input Alarm Output Exception

Camera

Enable Motion Detection

Area Settings > Arming Schedule > **Linkage Method**

<input type="checkbox"/> Normal Linkage	<input type="checkbox"/> Trigger Alarm Output	<input type="checkbox"/> Audio and Light Alarm Link...	<input type="checkbox"/> Trigger Recording
<input type="checkbox"/> Audible Warning			
<input type="checkbox"/> Send Email			
<input type="checkbox"/> Notify Surveillance Center			
<input type="checkbox"/> Full Screen Monitoring			