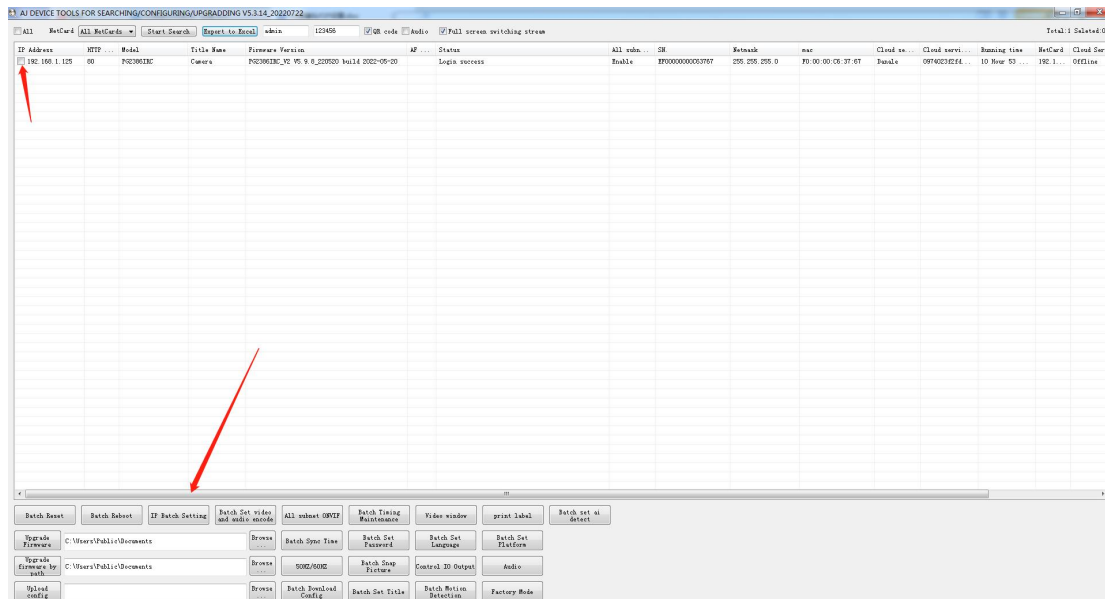
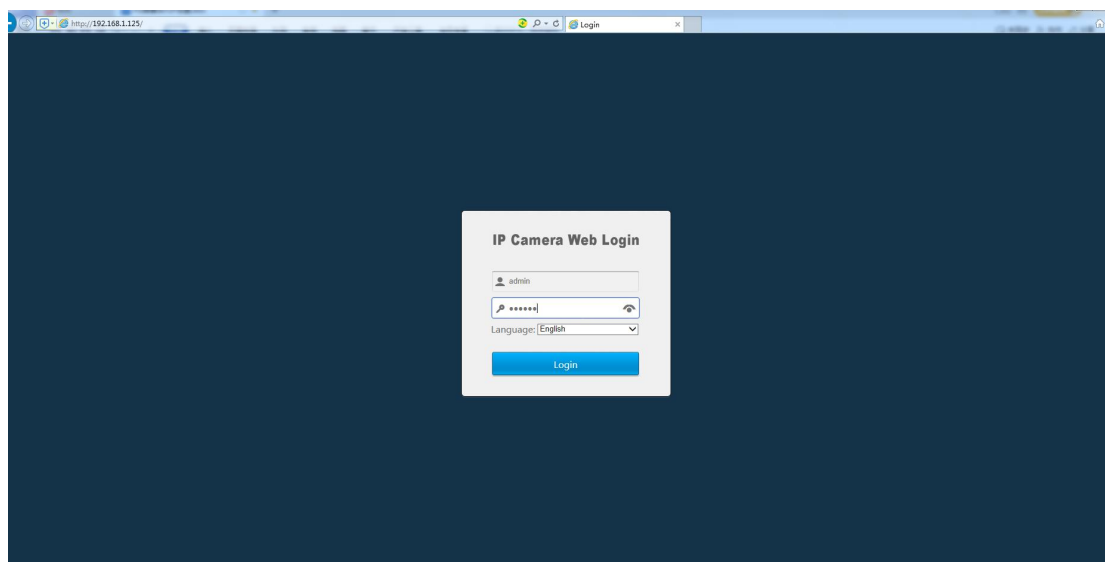


PG camera infrared settings

1. First connect the camera to the switch (or router) with a network cable, connect the computer network cable to the same switch (or router), download the search software AjDevTools from the computer, search, select the camera and modify the IP address on the same network segment as the computer .



2. Open the browser and enter the IP address of the camera, enter the web login interface, the default user name is admin, and the default password is 123456.



3. After logging in, click Settings - Camera - Graphics - IRcut Settings (Auto, Schedule, Off, Manual).

