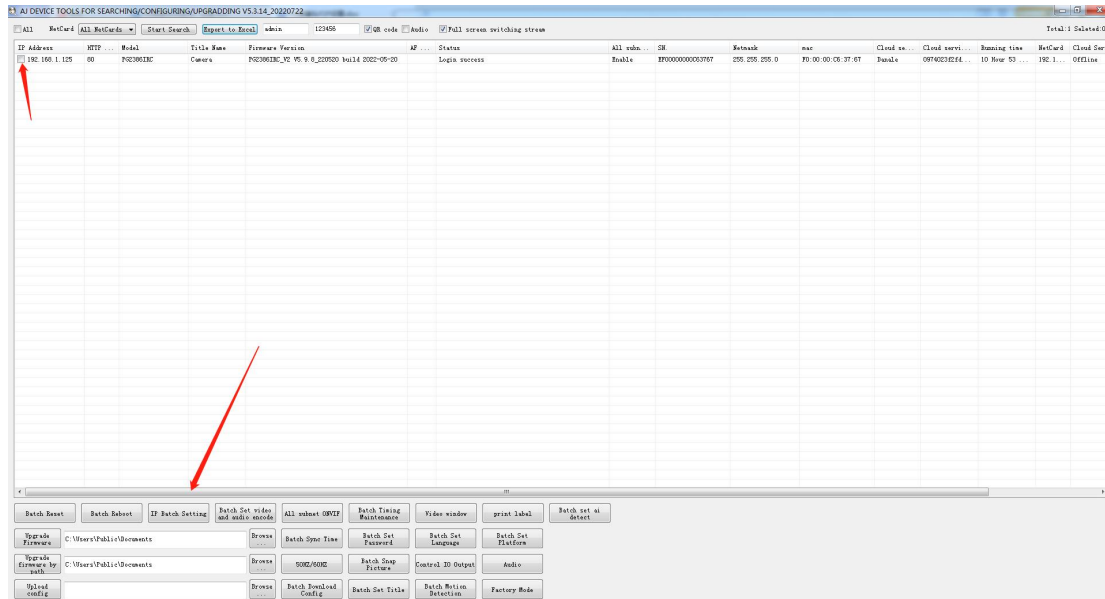
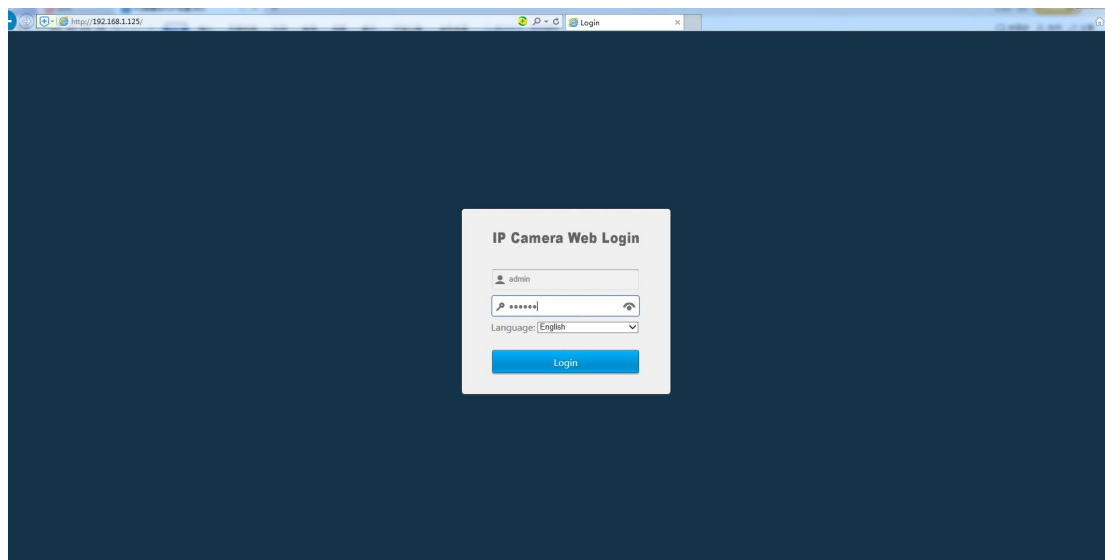


PG camera resolution setting

1. First connect the camera to the switch (or router) with a network cable, connect the computer network cable to the same switch (or router), download the search software AjDevTools from the computer, search, select the camera and modify the IP address of the same network segment as the computer.



2. Open the browser and enter the IP address of the camera, enter the web login interface, the default user name is admin, and the default password is 123456.



3. After logging in, click Settings - Camera - Video - Resolution - Save.

Live Playback Configuration Alarm Logout

Camera

Encode

Main Stream

Status	Enable
Video Compression	H265
Resolution	3840x2160
Frame Rate (fps)	20
Bit Rate Type	VBR
Quality	Good
Bit Rate (Kbps)	8000 (312-12288)
Frame Interval	60 (1-200)
Customize QP	Disable

Sub Stream

Status	Enable
Video Compression	H265
Resolution	1280x720
Frame Rate (fps)	20
Bit Rate Type	VBR
Quality	Good
Bit Rate (Kbps)	500 (64-1024)
Frame Interval	60 (1-200)
Customize QP	Disable

Third Stream

Status	Disable
--------	---------

Advance Encode

Profile	High Profile
---------	--------------

Reset Defaults Refresh Save

