

# PG camera setup automatic tracking

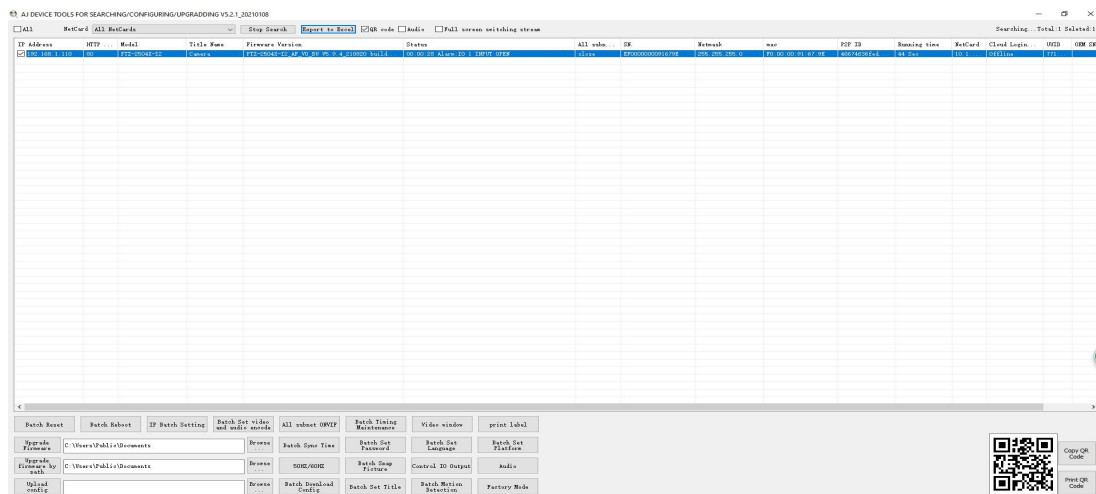
## A. Connect the camera.

- (1) The camera is directly connected to the computer and provides DC12V power supply for it.
- (2) Connect via POE switch.
- (3) Connect via router.



## B. Download and open the camera search tool. (the IP address of the camera that has not been activated is 192.168.1.110.)

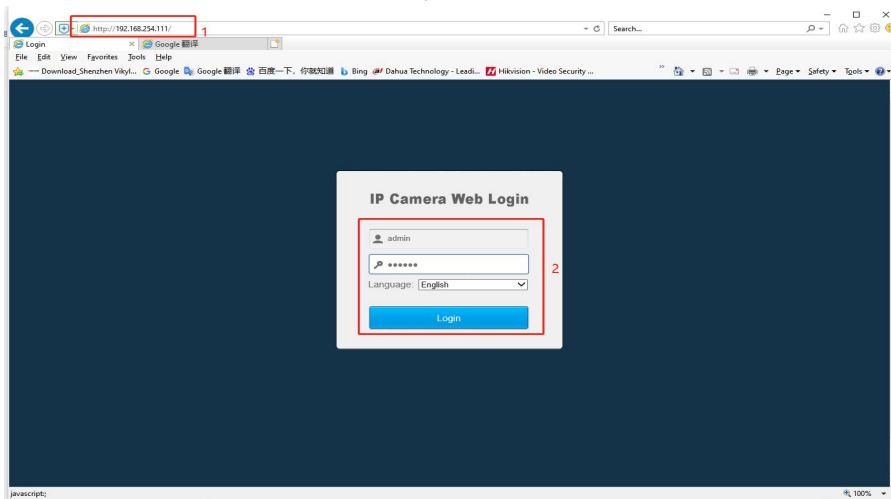
Download: <http://ourdownload.store/>



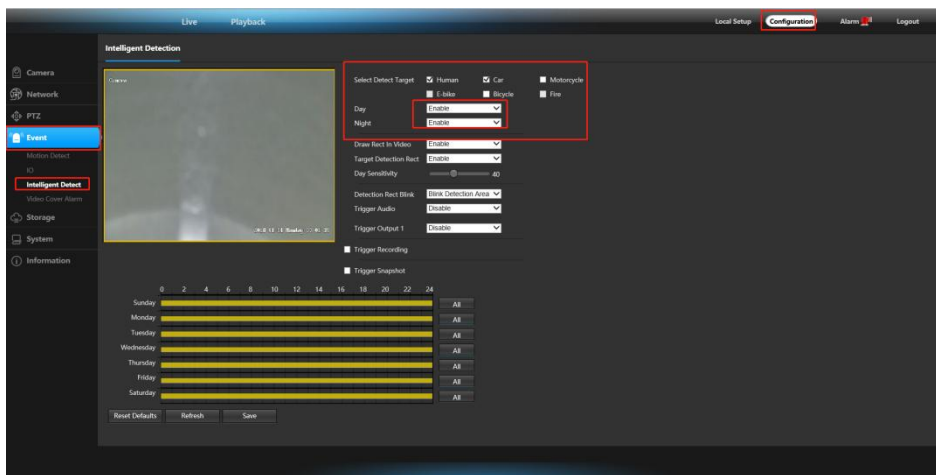
Check whether the camera's IP is in the same network segment as the computer's IP. If it is different, modify the camera IP to be in the same network segment as the computer.(the first three digits of the camera's IP address are the same as the computer's IP address, and the last digit is different.)

## C. Open the IE browser, fill in the camera IP address, fill in the camera account password, and download the plug-in preview (Need to close the browser when installing the plug-in to prevent the plug-in installation from being unsuccessful)

1. The initial account is **admin** and the password is **123456**.



2. Check whether the human detection function is turned on.



3. Click "live" to enable automatic tracking in "Preset" call92.

