

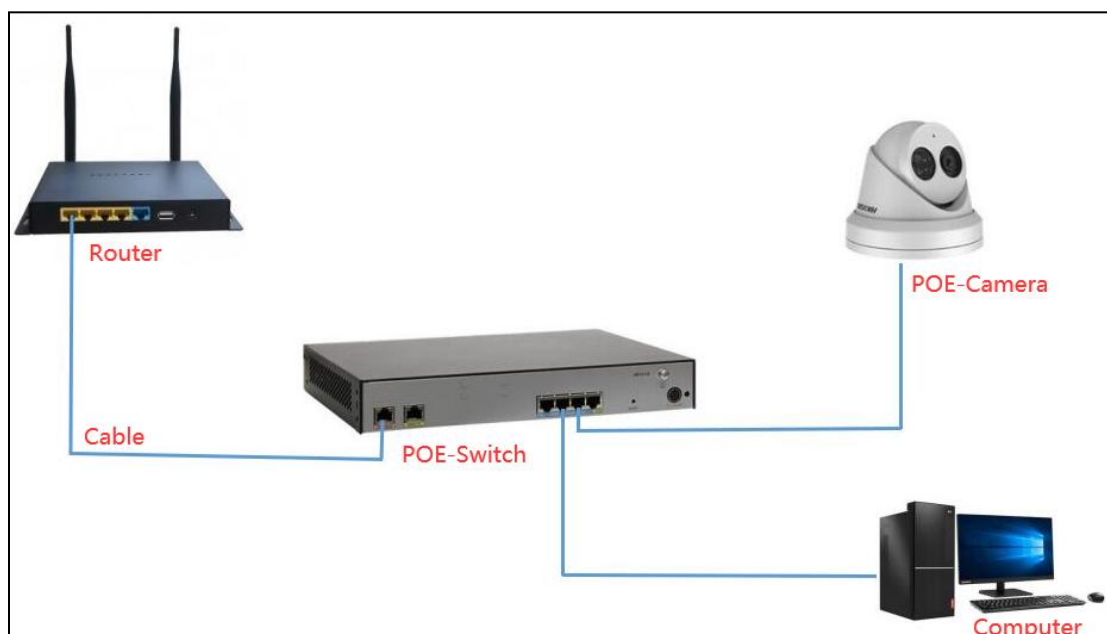
# Hikvision NVR connect PG camera

- 1、 Computer download and install search tool "ajdevtool" software .

Download : [www.ourdownload.store](http://www.ourdownload.store)



- 2、 Please keep the computer and camera on **the same LAN**--Please use a network cable to connect.

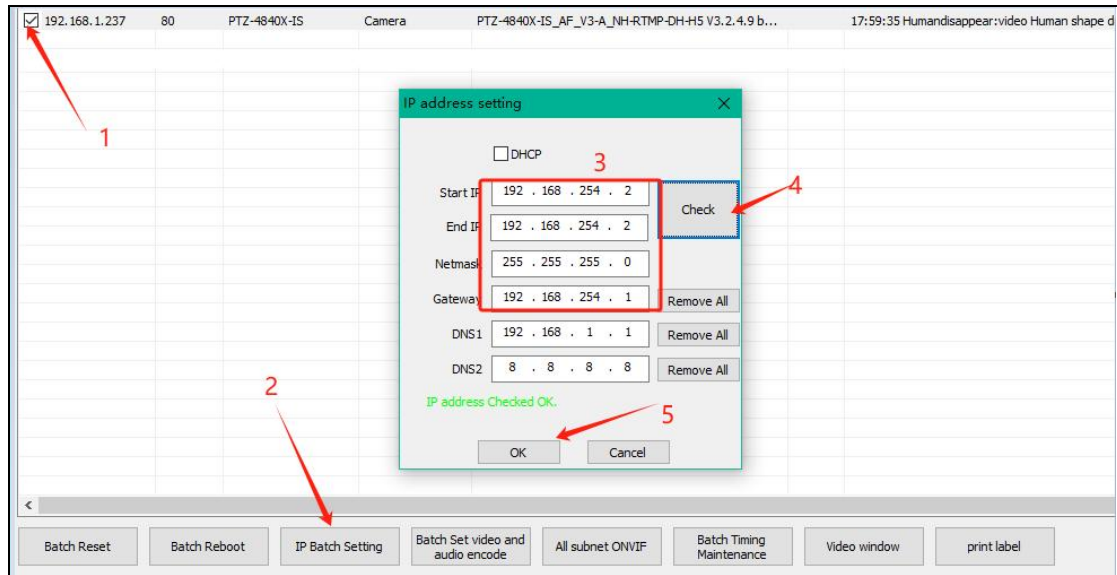


- 3、 Query the IP address of the camera through the search tool;

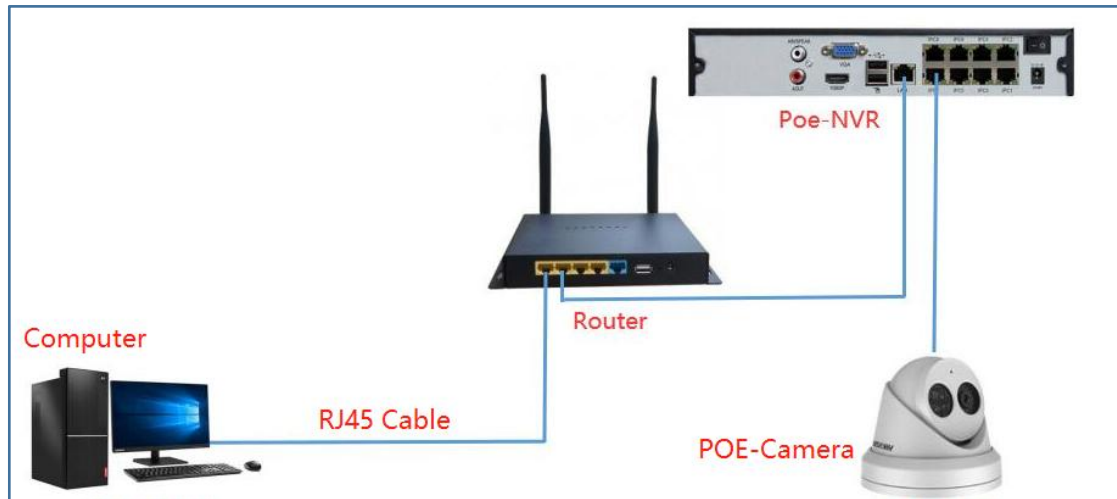
IP Address	HTTP Port	Model	Title Name	Firmware Version	AF V...	Status	All subnet ...
<input type="checkbox"/> 192.168.1.15	80	PG2356IRC	Camera	PG2356IRC_AF_V1-A_NH-RTMP-DH-H5 V3.2.5.6 bull...		Login success	close
<input checked="" type="checkbox"/> 192.168.1.13	80	YM8005V2_YPTZN_Y3	camera	YM8005V2_YPTZN_Y3_AF_V3-A_Y_EN-RTMP-H5_L V...	CAM...	Login success	close
<input type="checkbox"/> 192.168.1.237	80	PTZ-4840X-IS	Camera	PTZ-4840X-IS_AF_V3-A_NH-RTMP-DH-H5 V3.2.4.9 b...		17:32:38 Humandisappear:video Human shape detected ...	close

#### 4、 Modify camera IP address

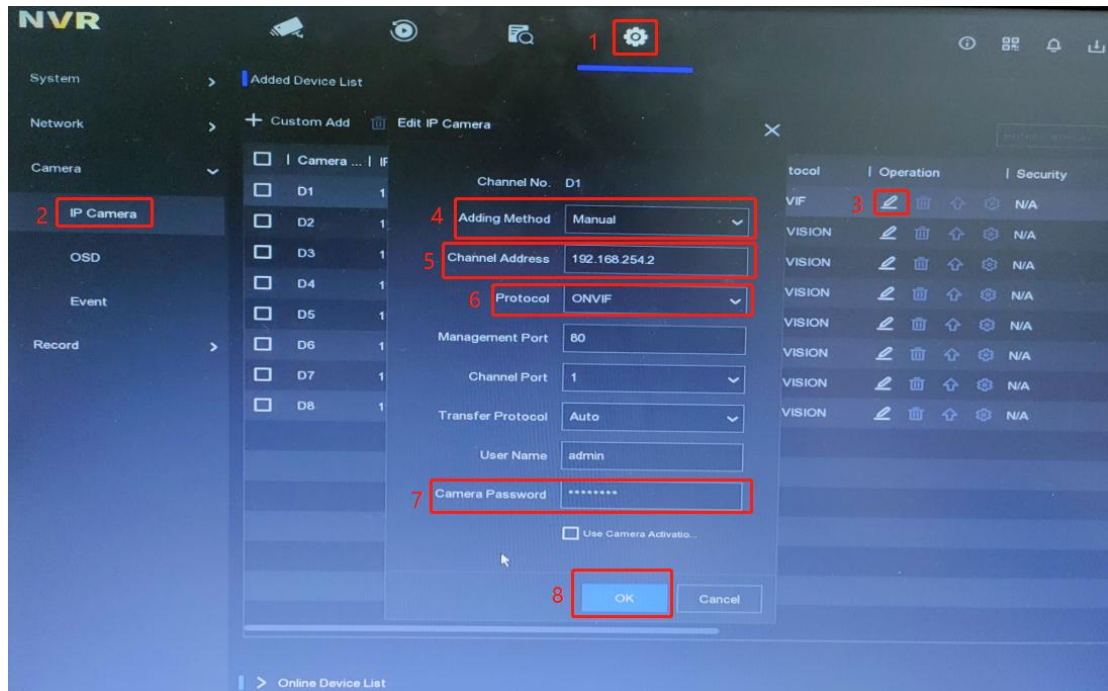
- ①Select camera IP address;
- ②Modify the IP address to be an address between 192.168.254.2---192.168.254.254 and the gateway is set to 192.168.254.1;
- ③Enter the camera password: 123456;
- ④Select Modify---Parameters modification completed;



#### 5、 Connect the camera to the POE port of Hikvision NVR



- 6、 Right mouse button--Select Menu --①Configuration--②Camera--③Click Edit--④Choose Manual--⑤Enter 192.168.254.2--⑥Choose ONVIF--⑦Enter IP Camera Password--⑧Click OK



Added successfully--Choose Live View display image;