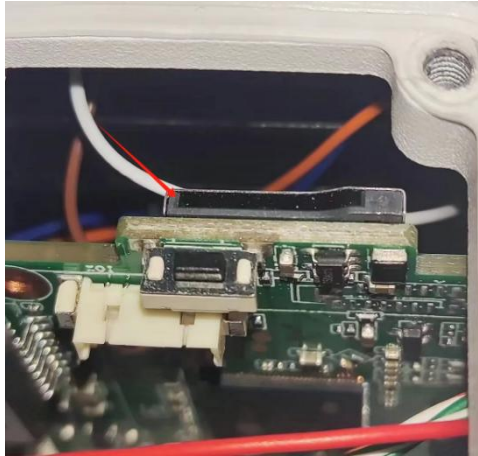
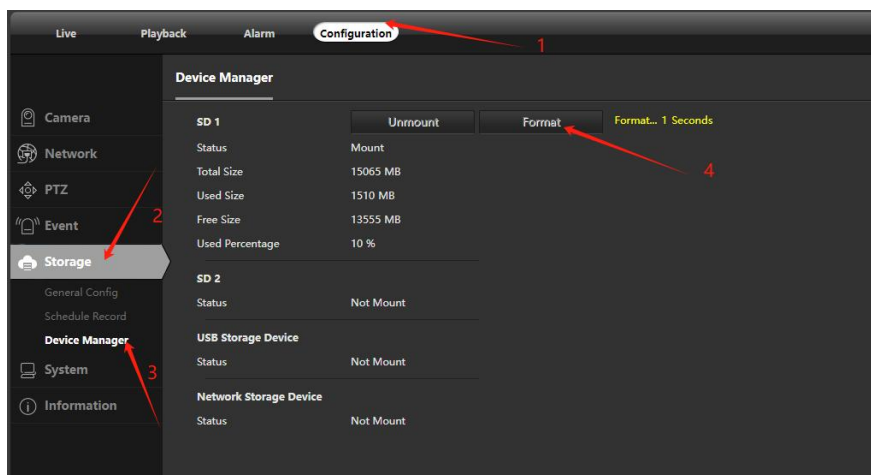


# pg sd card installation and storage

1. Open the device sd card slot and mount the sd card.



2. Login to the camera web site, click "Configuration - Storage - Device manager", select the camera and click "format".



3. Set the recording time, click "Schedule Record" and select the time you want to record, the camera will continue to record during the drawn time.



4. Event Alarm Recording, after setting up the event, click "Trigger Recording", the camera will record only when motion detection is triggered.

