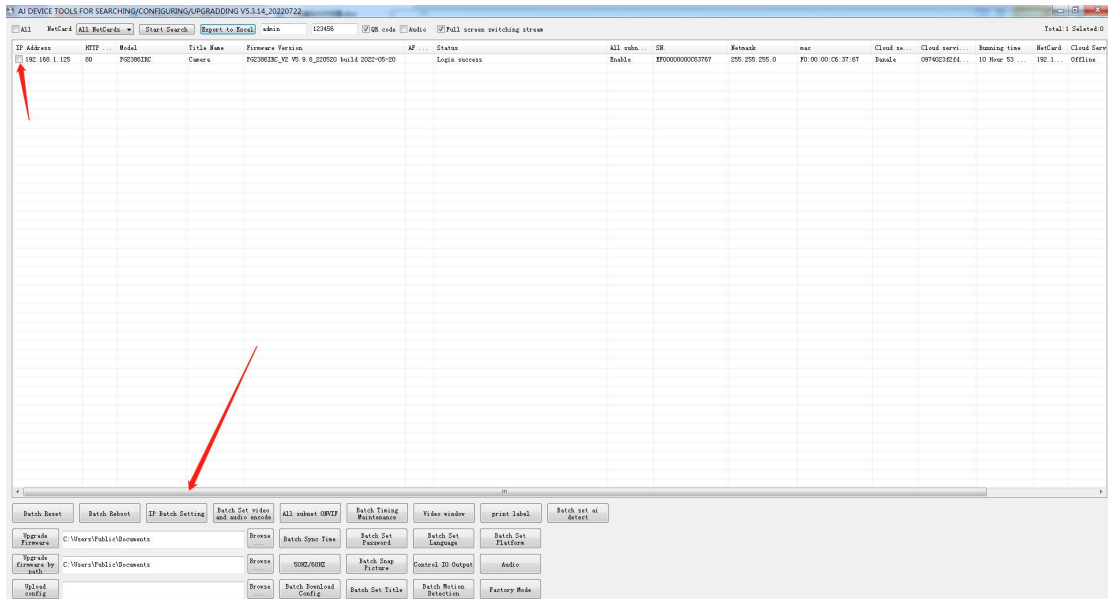
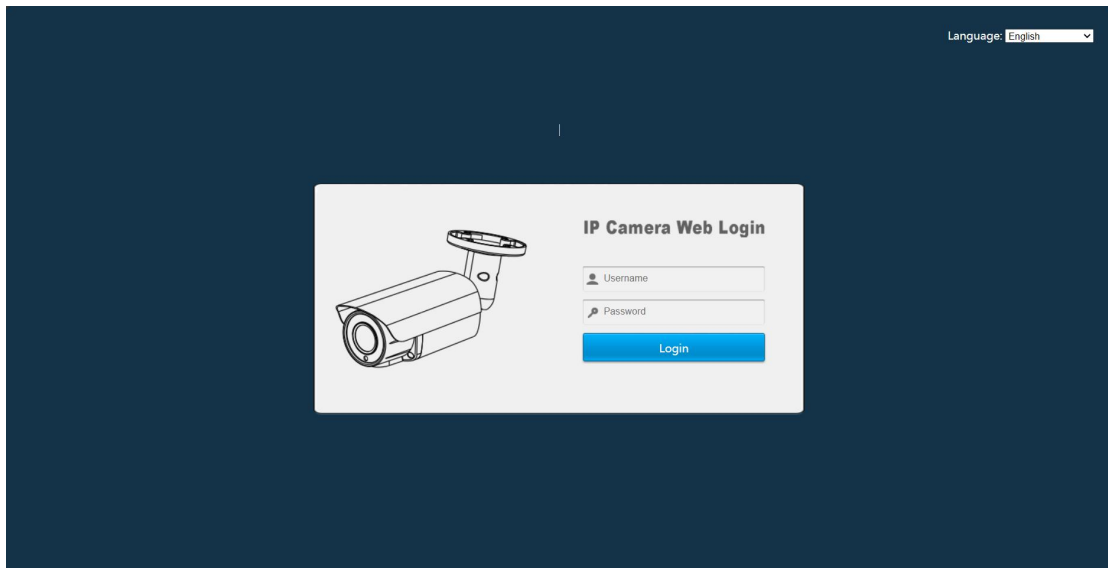


# PG camera intelligent detection settings

1. First connect the camera to the switch (or router) with a network cable, connect the computer network cable to the same switch (or router), download the search software AjDevTools from the computer, search, select the camera and modify the IP address of the same network segment as the computer.



2. Open the browser, enter the IP address of the camera, and enter the web login interface. The default username is admin and the default password is 123456.




3. After logging in, click Settings-Events-Intelligent Detection, select Detection Target-Drawing Area-Set Time-Save.

Live Playback Alarm **Configuration**

**Intelligent Detection** Video Gate

Camera Network PTZ **Event** Motion Detect IO **Intelligent Detect** Storage System Information



Event ID: 2024-05-10 15:28:38

Select Detect Target  Human  Car  Motorcycle  
 E-bike  Bicycle  Fire

Status **Enable**

Arming Setting **All Day Deployment**

Draw Rect In Video **Enable**

Target Detection Rect **Enable**

Filter Out Static Target **Enable**

Day Sensitivity

Detection Rect Blink **Disable**

BLink LED Light **Disable**

Upload Alarm Center **Disable**

Alarm Push To App **All Day Deployment**

Trigger Audio **Disable**

Trigger Output 1 **Disable**

Trigger Recording

Trigger Snapshot