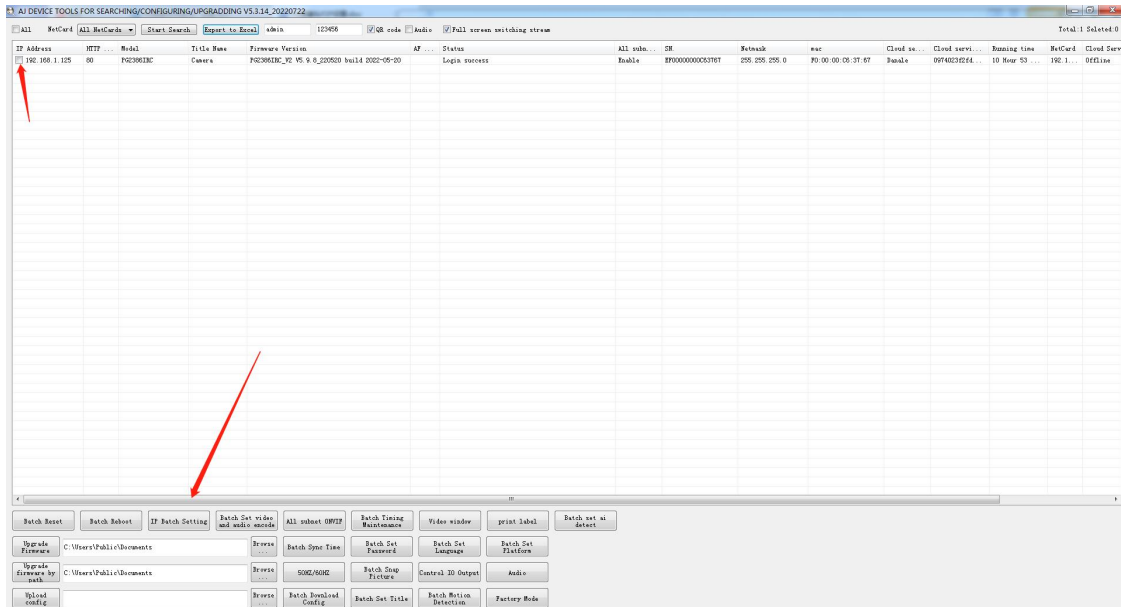
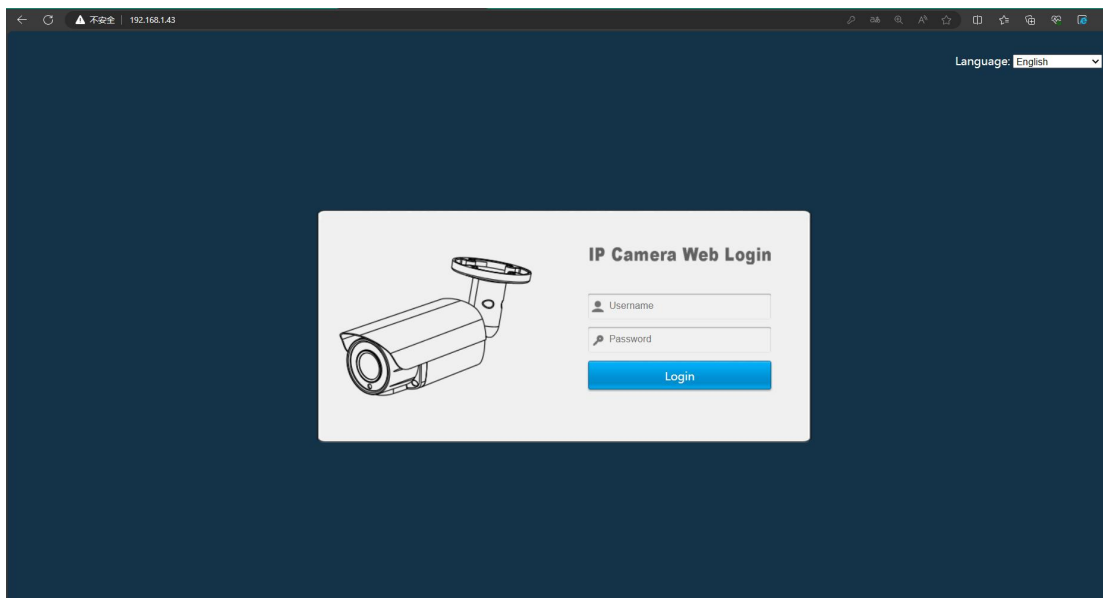


Camera P2P Settings

1. First connect the camera to the switch (or router) with a network cable, connect the computer network cable to the same switch (or router), download the search software AjDevTools from the computer, search, select the camera and modify the IP address of the same network segment as the computer.



2. Open the browser and enter the IP address of the camera, enter the web login interface, the default user name is admin, and the default password is 123456.



3. After successful login, click Settings, find Network-P2P, Enable-Save, wait for 3-5 minutes to generate a QR code, the status is online, use the mobile VideoLink APP to scan the code to add.

Live Playback Alarm **Configuration**

Camera

Network

- Basic
- Service Ports
- P2P**
- SMTP (Email)
- FTP
- RTMP
- Alarm Server Center
- Connect Check

PTZ

Event

Storage

System

Information

P2P


Enable

Authorization Code

Login Status Online

Cloud ID a1zTrD:

QR Code



Note: Please wait a moment, it may take about 3 - 5 minutes to get online after enable cloud service.