

PG Series POE IP Camera Quick Start Guide



Scan to Get User Manual

More operation details:
<https://www.vikylin.com/pg-series-ip-camera-quick-start-guide/>

System Requirement

- Operating System
Microsoft Windows XP SP1/7/8/ 10
- CPU
3.0 GHz or higher
- RAM
4G or higher
- Display
1024×768 resolution or higher

Web Browser
For camera that supports plug-in free live view
Internet Explorer 8 – 11, Mozilla Firefox 30.0 and above version and Google Chrome 41.0 and above version.

Note:
If you want to use the full range of features, such as Sound, Record, Sanpshot, and Talk, please use Internet Explorer.

Network Connection

2.1 Setting the Network Camera over the LAN

Purpose:
To view and configure the camera via a LAN, you need to connect the network camera in the same segment with your computer, and install the AjDevTools or SADP software to search and change the IP of the network camera.

Tools: <https://www.ourdownload.tech/>

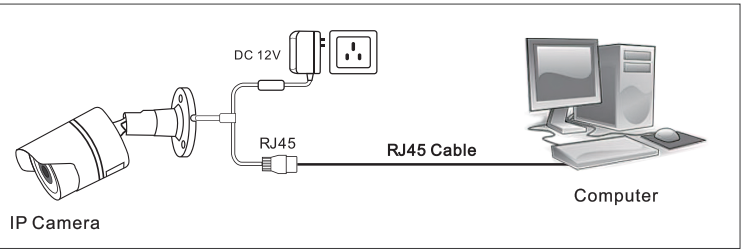


2.2 Wiring over the LAN

The following figures show the two ways of cable connection of a network camera and a computer:

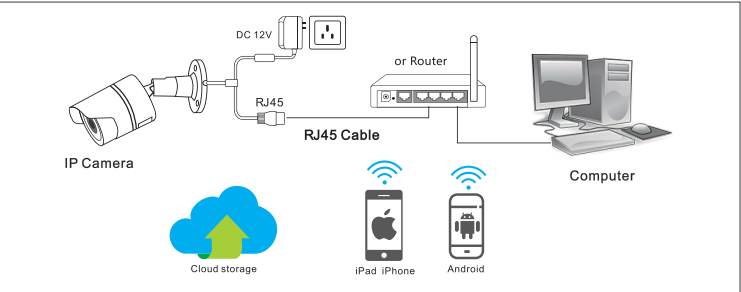
Purpose:

2.2.1 Connect directly.



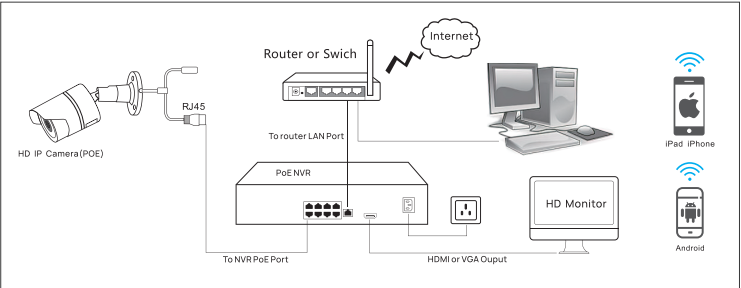
Connecting Directly

2.2.2 Connect via a switch or router. (If the switch is POE, no power is required for the camera).

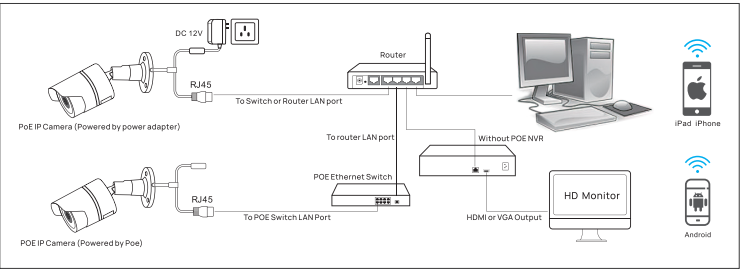


Connecting via a Router or a Switch

2.2.3 Connect via network video recorder.



NVR with POE



NVR without POE

Access to the Network Camera

3.1 Accessing by Web Browsers

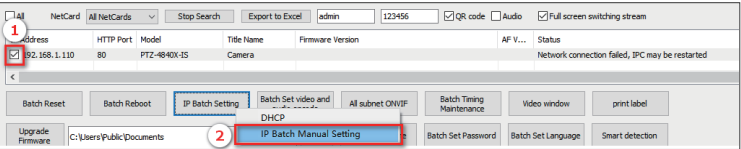
3.1.1 Computer download and install the AjDevTools or SADP software tool (Please refer to 2.1).

3.1.2 After installation,open the software and click the Start Search.

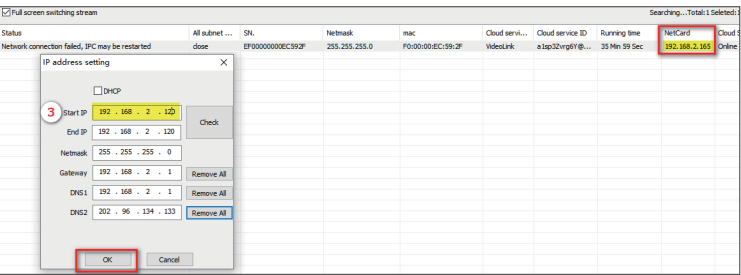


3.1.3 Modify the IP address of the camera to be consistent with the network segment of the PC.

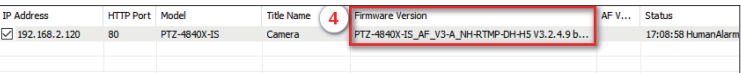
- ① Search for the IP address of the camera ;
- ② Query the IP address of the Camera.



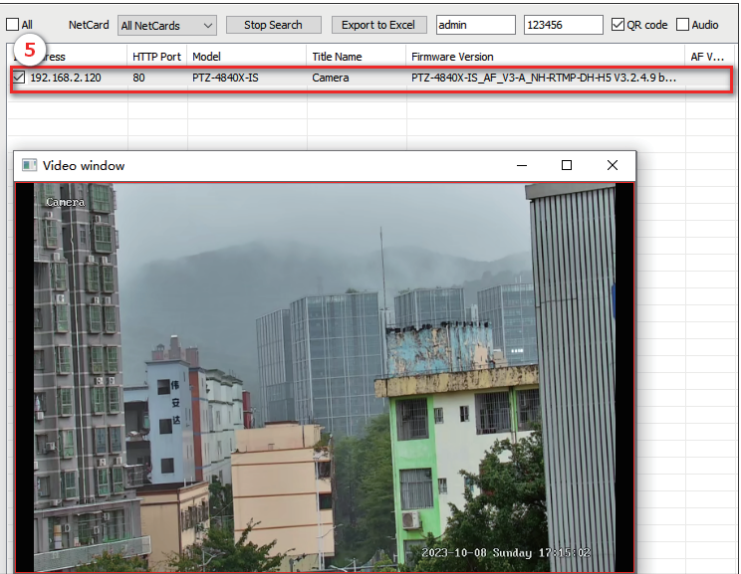
③ Modify the IP address of the camera to be in the same network segment as the IP address of "NetCard".



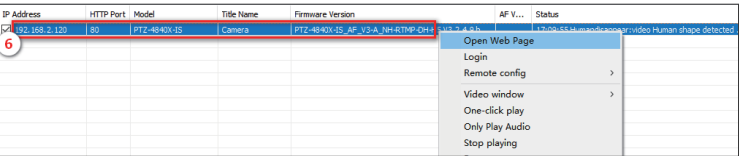
④ the Firmware Version display--Successfully modified .



⑤Click the left mouse button continuously to see the image of the camera



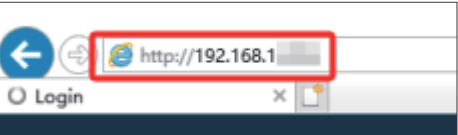
⑥ If you want to configure the camera,select the device and click the right mouse button,click the Remote config or Open Web Page.



3.2 Web login

3.2.1.Open the Internet Explorer or click the Open Web Page on the tool.

3.2.2.Enter the IP address of the camera into the address bar.



3.2.3.Input the user name and password and click Login.

Note:

The default IP address is 192.168.1.110. Username: admin
Password: 123456



3.2.4 Enter the preview screen.



Note:

① First login Click "install Web Plug-in" when prompted.

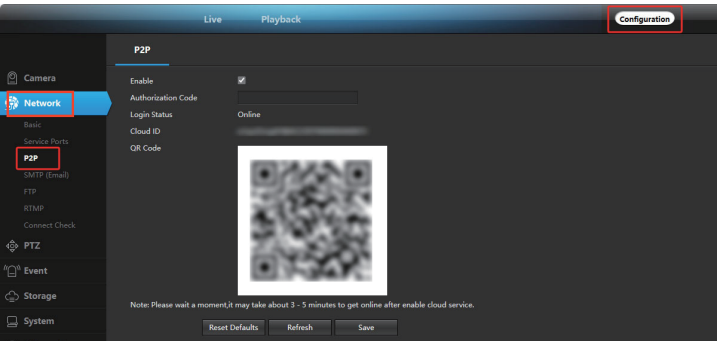


② If failed to install plug-in, download and save the WEBConfig.exe to computer, close all browsers then re-install it.

③ If there is a delay in video response when accessing remotely, please switch to **Sub Stream** instead. To learn the function of each button, just put the mouse on, it will show screen tips.

3.2.5 Connect mobile APP (P2P).

Steps:Configuration > Network >P2P >Enable>Save.



The mobile APP(Videolink) can access the camera remotely by entering the **cloud ID** or **scanning the QR code**

The camera and computer must be on the same network segment for successful connection and display of the camera's images. So you need to change the IP address of the camera and computer on the same network segment.

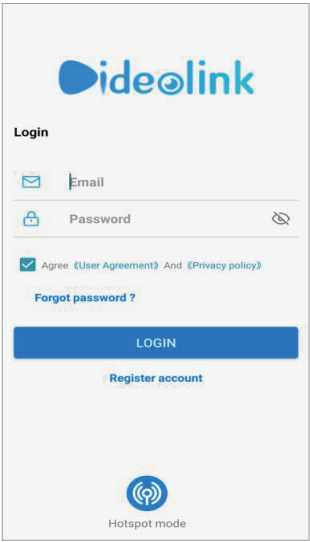
Add steps:

Visit the App Store or the Google Play Store to download the **Videolink** app.

Scan QR code download



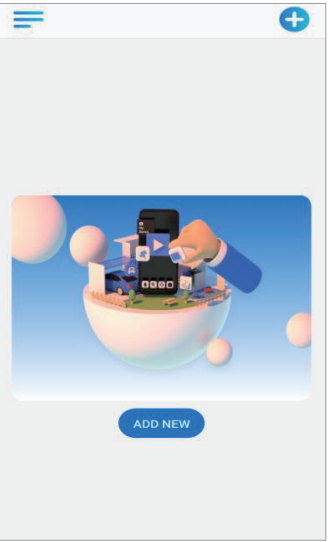
Videolink



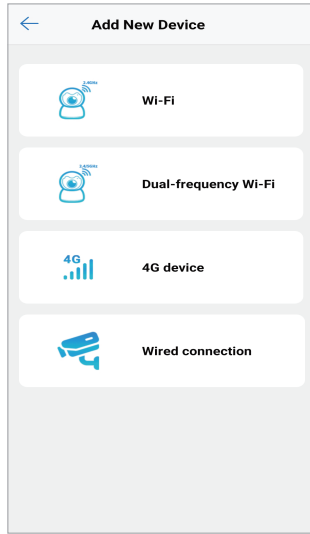
①

① For new users, please select "registered account".In the following page, Create Account ,and enter your email or mobile number.Fill in the received verification code.

② Login with a registered account,Select to "ADD NEW",Select "Wired connection" to get into the scan camera QR code page.



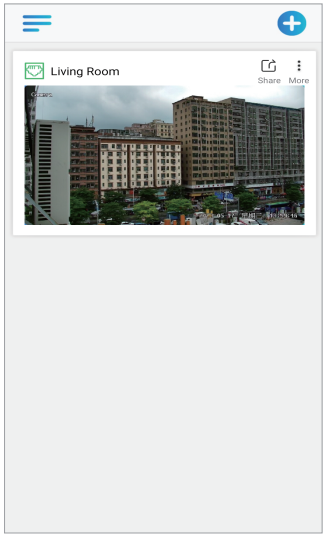
②



③



③ Scan the QR code of the P2P interface displayed on the web side of the camera→ Choose Name of you Device.The camera has been successfully added to the phone.(Please refer to 3.2.5)

④ select the camera list to start viewing video.



④

Tips:

- ① Select  to check your account profile and configure settings on .
- ② To share your camera with your friends or another user, click  icon and type in or scan his/her Videolink account.

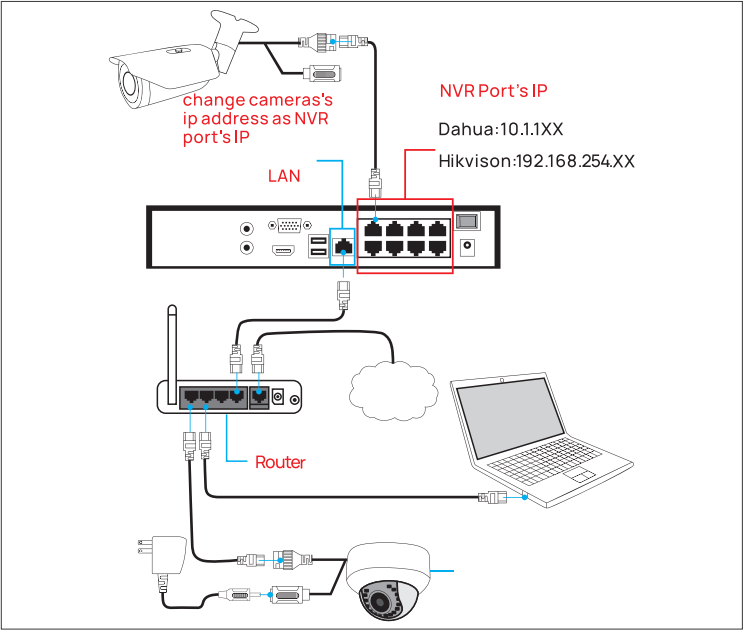
Note:

If you can not connect the camera, please check your **Internet connection and verify the IP address, gateway, and DNS setting** in the camera. The Cloud login status should be online, which means the camera has registered to the cloud server.

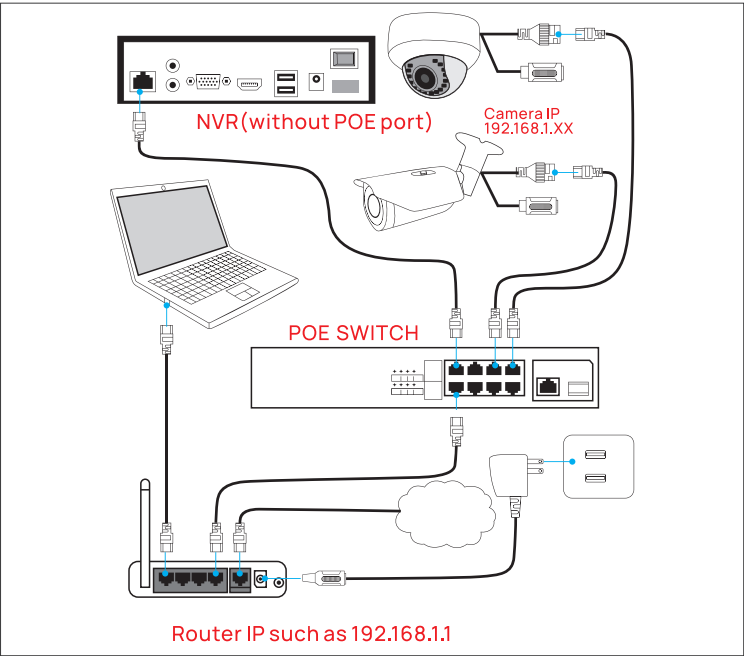
Camera Connection to NVR

There are two ways that connect to **NVR** (two types of NVR).

① Connect to POE port NVR



② Connect to without POE port NVR



The camera can work with Hikvision **POE NVR**,Plug and Play, besides,the IP camera also supports standard **ONVIF** protocol ,which can be added to third-party video recorder easily with **ONVIF**.

Note:

① Before connecting cameras to **NVR** that has **POE switch** ,make sure the **NVR** and cameras have valid IP scheme that matchs each other.(e.g.: Dahua NVR POE Port's IP Network Segment is **10.11.XX**, so the camera IP must be **10.11.XX**)

② Before connecting cameras to **NVR** that has no **POE switch**, make sure the **NVR** , cameras and the **POE switch** router have valid IP scheme that matchs each other.(e.g.: **the IP address of** router is **192.168.1.1**, so the camera IP must be **192.168.1.XX**)

③ Some **POE NVR** models support plug and play(such as Hikvision **POE NVR**),if the Plug-and-Play is not available or not applicable, please **Change the adding method to Manual**.

Frequently Asked Questions

5.1 Why can't I open the default IP address **192.168.1.110** via web browser ?

The default IP address may not match your LAN's IP scheme. Check your computer's IP address before accessing the camera. If the IP address does not match the **192.168.0.x** scheme, please install the IP search tool from the download website to modify the camera's IP address. Make sure the IP address of the camera matches the LAN IP scheme. For example, if the your LAN is **192.168.1.xxx** (**192.168.2.xxx**) ..., then set the IP camera to **192.168.1.123** (**192.168.2.123**) ... and so on.

For details about how to change the IP address, please refer to 3.1

5.2 How to reset the password?

The default Username: **admin**, Password: **123456**. If you lost the password or want to reset the camera's setting, please install the search **tool Ajdev** to search the camera IP and click Batch Reset button.

5.3 How to upgrade the IP camera?

- ① Ask the supplier for the suitable firmware.
- ② You can use the web browser, **Ajdevtools**, or PC client to upgrade the camera.
- ③ Go to the **Configuration > System > update**, click browse and select the firmware, then click **Upgrade** button and wait for the operation to complete.

5.4 How to fetch the RTSP video stream and http snapshot ?

- ① Main Stream: **rtsp://admin:123456@IP address/stream0**
- ② Sub Stream: **rtsp://admin:123456@IP address/stream1**
- ③Main stream snapshot:
http://192.168.20.131/snapshot.cgi?stream=1&username=admin&password=12345
- ④Sub Stream snapshot:
http://192.168.20.23/snapshot.cgi?stream=0&username=admin&password=123456

5.5 Why does the NVR not show image after adding your IP camera ?

- ① Make sure you selected the right protocol and enter the correct username and password when adding the cameras.
- ② Make sure the NVR and IP camera are the same IP **segement**. (eg. NVR:**192.168.1.x**, and IP camera:**192.168.1.y**).
- ③ Try changing the camera encode mode to **H.264** if the NVR can't support **H.265**. (**Configuration → Camera → Video > Encode mode: H.264**)