

# YC(N) Series POE IP Camera Quick Start Guide



## System Requirement

- Operating System**  
Microsoft Windows XP SP1/7/8/ 10
- CPU**  
3.0 GHz or higher
- RAM**  
4GB or higher
- Display**  
1024×768 resolution or higher

- Web Browser**  
Internet Explorer 8 – 11, Mozilla Firefox 30.0 and above version and Google Chrome 41.0 and above version.

## Network Connection

### 2.1 Setting the Network Camera over the LAN

**Purpose:**  
To view and configure the camera via a LAN, you need to connect the network camera in the same subnet with your computer, and install the **Setting Tool** or **SADP** software to search and change the IP of the network camera.

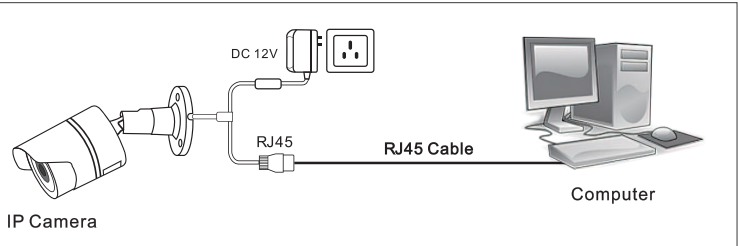
**Tools:** <https://www.ourdownload.tech/>



### 2.2 Wiring over the LAN

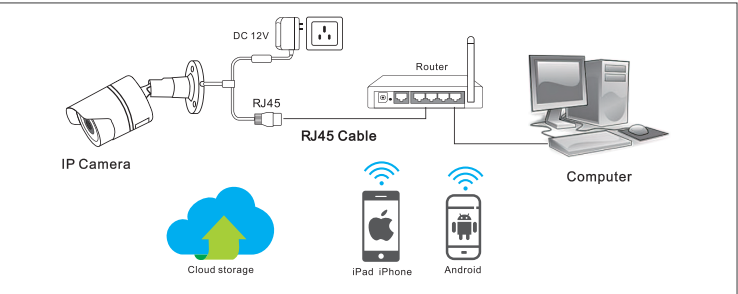
The following figures show the three ways of cable connection of a network camera and a computer:

- Purpose:**  
① To test the network camera, you can directly connect the network camera to the computer with a network cable. (Connecting directly must supply the camera with DC 12V power supply)



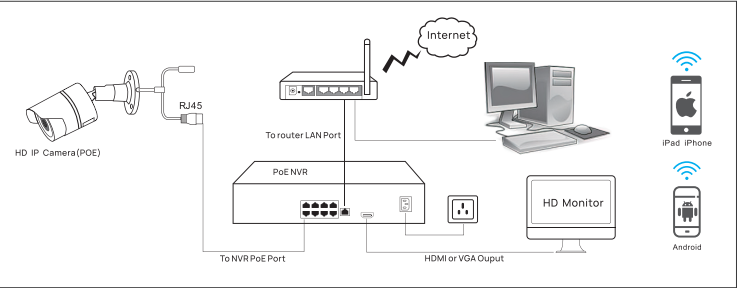
Connecting Directly

- ② Set network camera over the LAN via a switch or a router. (If it is a POE switch, you do not need to power the camera).

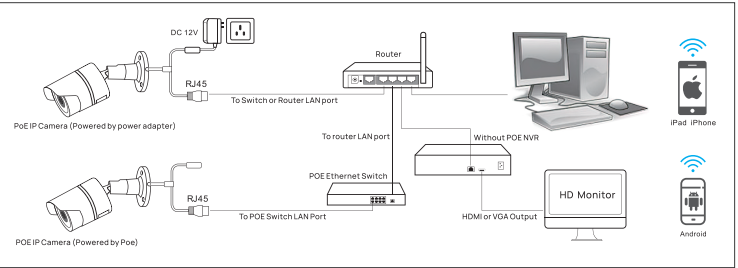


Connecting via a Router or a Switch

- ③ Connect cameras to NVR.



NVR with POE



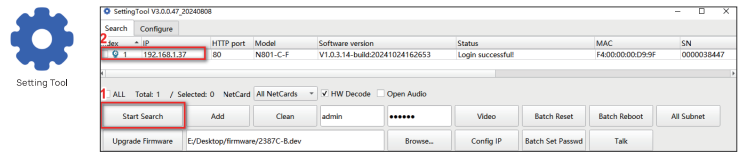
NVR without POE

## Access to the Network Camera

### 3.1 Access through Tool

#### Steps:

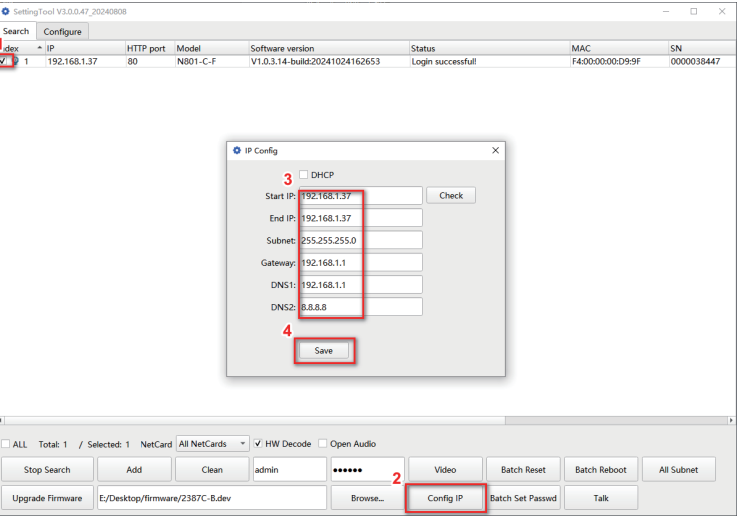
- Computer download and install the **Setting Tool** or **SADP** software tool.
- After installation, open the software and click the **Start Search**.
  - Search for the **IP address** of the camera;
  - Query the **IP address** of the Camera.



- Modify the IP address of the camera and computer in the same network segment (If there is a router in the LAN, you can skip the Setting method)

#### Setting method:

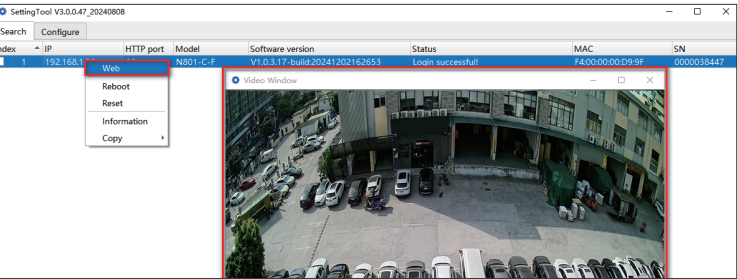
- Check the IP address of the camera;
- Click the "**Config IP**" button;



- Modify the **IP address** of the camera to make it consistent with the network segment of the computer, or check **DHCP** to automatically modify;

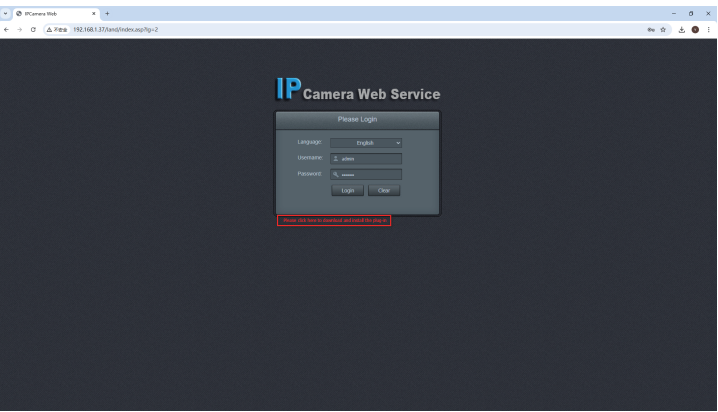
- Click the "**Save**" button;

- The status shows that the login is successful. Double-click the camera IP to display the image. You can also select the camera, right-click the mouse, and click "Web" to quickly access the web page.



### 3.2 Web login

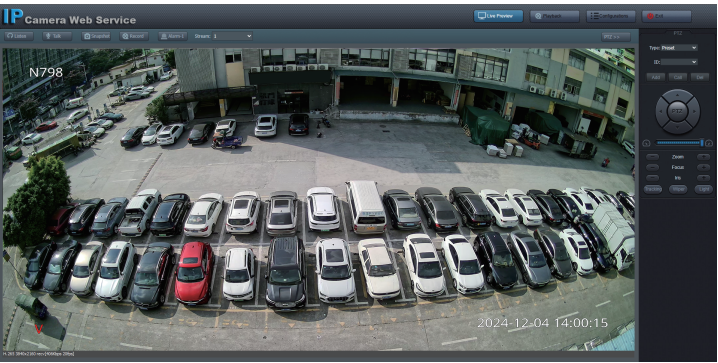
- Open the browser or click "**Web**" on the search tool;
- Enter the **IP address** of the camera in the browser address bar;
- Enter the **username** and **password**, and click the "**Login**" button.



#### Note:

The default IP address is **192.168.0.123**. Username: **admin**  
Password: **123456**  
First login Click "**install the Plug-in**" when prompted.

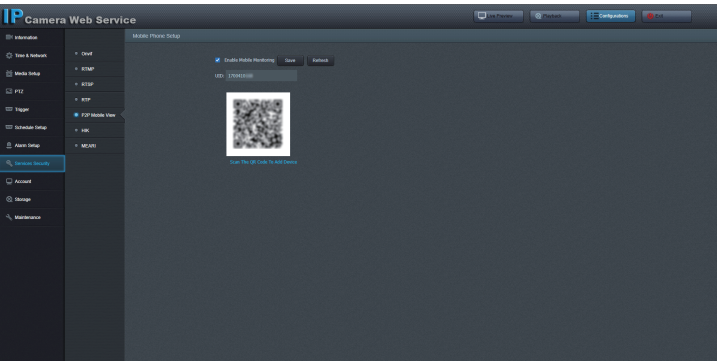
- You have to download and run the executable as administrator.
- If failed to install plug-in, download and save the **PlayerOcxSetup.zip** to computer, close all browsers then re-install it.



- If there is a delay in video response when accessing remotely, please switch to Sub Stream instead. To learn the function of each button, just put the mouse on, it will show screen tips.

- P2P function settings

**Steps:** Configurations > Services Security > P2P Mobile View > Enable



By adding an **ID number** or scanning a **QR code**, you can view the camera anywhere with a mobile phone.

After downloading the **Remoteyes** APP in the **Apple App Store** or **Google Store**, please register an account to log in, and then add the camera to watch.

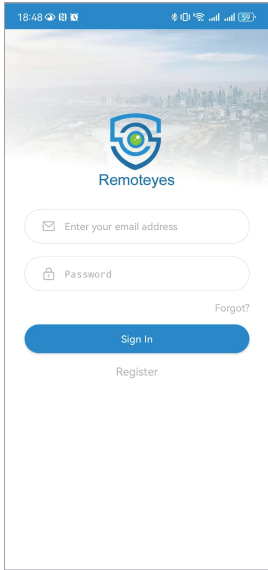
P2P function add steps:

Visit the Apple APP Store or Google Store to download the **Remoteyes** APP for IOS or Android mobile phones.  
You can also scan the **QR code** below to download.

Scan QR code download

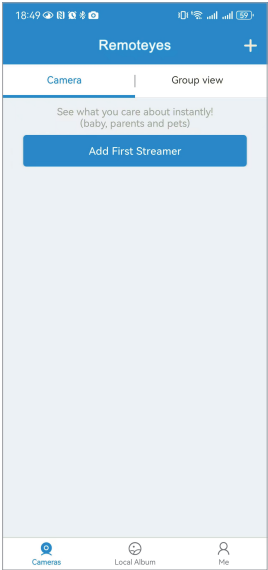


Remoteyes



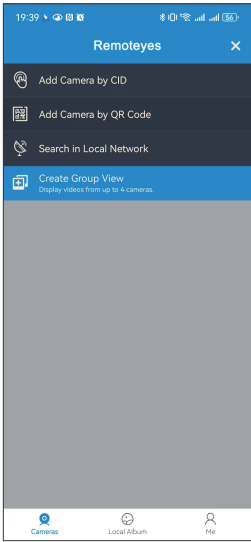
①

① For new users, please click the **Register** button and enter your email and password to register.



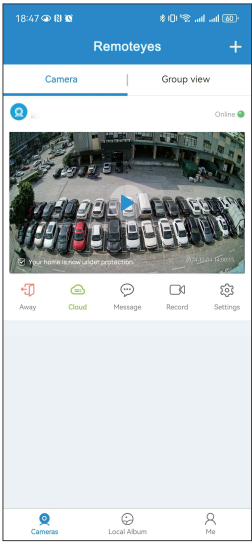
②

② Enter the main interface of the APP and click **+** .



③

③ Select **Add Camera by QR Code** and **scan the QR code** on the camera webpage (refer to 3.2-4).



④

④ Select the **camera** to watch remotely.

Tips:

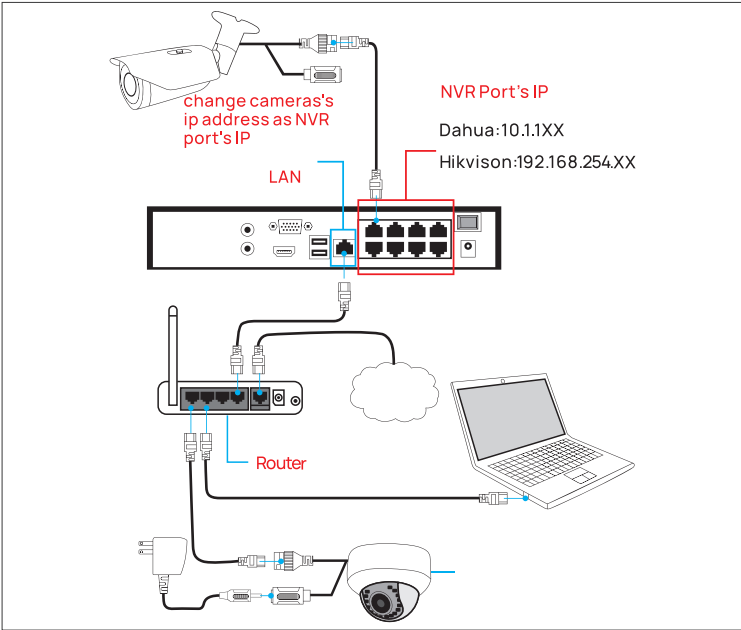
Select **Me** to check your account profile and configure settings on .

Note:

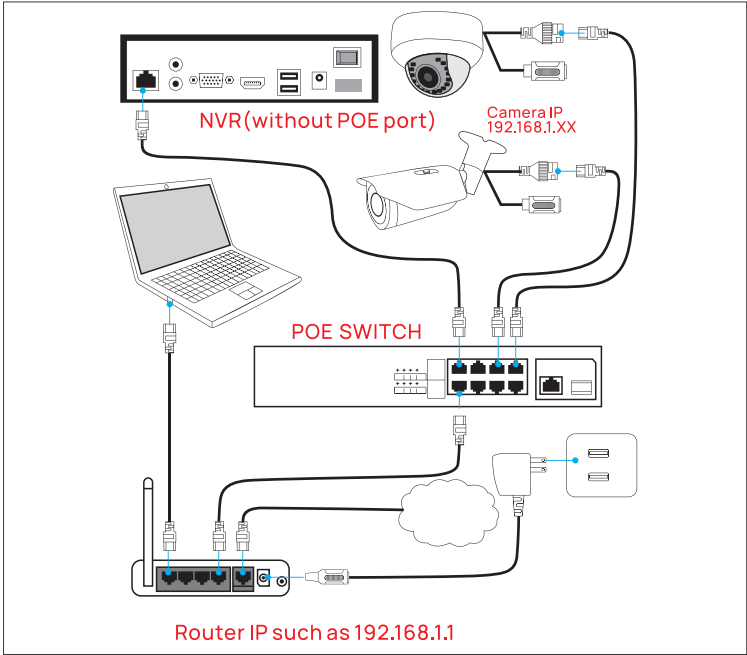
If you cannot connect to the camera or it is not online, please check the IP settings of the camera. (Configurations→Time&Network→IP Address→**DNS**).

Camera Connection to NVR

There are two ways that connect to **NVR** (two types of NVR).



① Connect to NVR with POE ports



② Connect to NVR without POE ports

Connect to Hikvision NVR with POE port---- **Plug & Play**

Connect to Dahua NVR with POE port---- **Plug & Play**

Connect to third-party NVR---- Connected via Onvif protocol(Conform to the standard)

Note:

① Before connecting to a third-party recorder, you need to confirm the **POE network segment of the NVR** (for example, the NVR is 10.1.1.1).

② Use SettingTool to modify the device IP to **10.1.1.X** (2-254), please refer to **3.1-Setting method**.

③ Manually enter the modified IP on **the third-party NVR** and select the **onvif** protocol to add.

Frequently Asked Questions

5.1 Why can't I open the default IP address **192.168.0.123** via web browser ?

Because the **network segments** of the camera and the computer are inconsistent.

If there is **a router in the LAN**, the camera will be in **DHCP mode** by default. It will automatically obtain an IP address from the router. You can find the IP of the camera through **SettingTool**, and then enter the searched IP on the web page; if there is **no router in the LAN**, the IP address of the camera is 192.168.0.123, please change the network segment of the computer to **192.168.0.X**

5.2 How to reset the camera ?

Camera default username: admin Password: **123456**  
If you forget the password or want to restore the device to default parameters, you can search for camera through **SettingTool** and click the "**Batch Reset**" button (if the camera has a built-in hardware reset button, you can press and hold it for 10 seconds after powering on).

5.3 How to upgrade the IP camera?

- ① Ask the supplier for the suitable firmware.
- ② Enter the camera's webpage and click Configurations→Maintenance→Upgrade; you can also upgrade through SettingTool [Upgrading is risky and takes about 2 minutes. Please do not power off during the upgrade].

5.4 How to fetch the RTSP video stream and http snapshot ?

- ①Main Stream: rtsp://admin:123456@IP:554/media/live/1/1
- ② Sub Stream: rtsp://admin:123456@IP:554/media/live/1/2
- ③ Low resolution snapshot: http://IP/cgi/special.cgi?act=snapshot&stream=1
- ④ HD resolution snapshot: http://IP/cgi-bin/snapshot.cgi?act=snapshot&stream=0(**some models support**)

5.5 Why does the NVR not show image after adding your IP camera ?

- ① Make sure you selected the right protocol and enter the correct username and password when adding the cameras.
- ② Make sure the NVR and IP camera are the same IP scheme. (eg. NVR:**192. 168. 1.x**, and IP camera:**192. 168. 1.y**).

③ Try changing the camera encode mode to **H.264** if the NVR can't support **H.265**. (Configurations>Media Setup>Video Setup>Encode Type:H.264)

5.6 How to make the NVR record in motion detection mode ?

- ① Enable the IP camera motion detection function via web browser.
- ② add the IP camera via **ONVIF** protocol.
- ③ change the **NVR** record mode to Motion Detection mode.
- ④ check the **NVR** screen motion detection icon and try

playback (Please refer to your NVR's manualfor NVR's motion record option.)