

④ Download the mobile app **Guarding Vision** on your mobile phone.



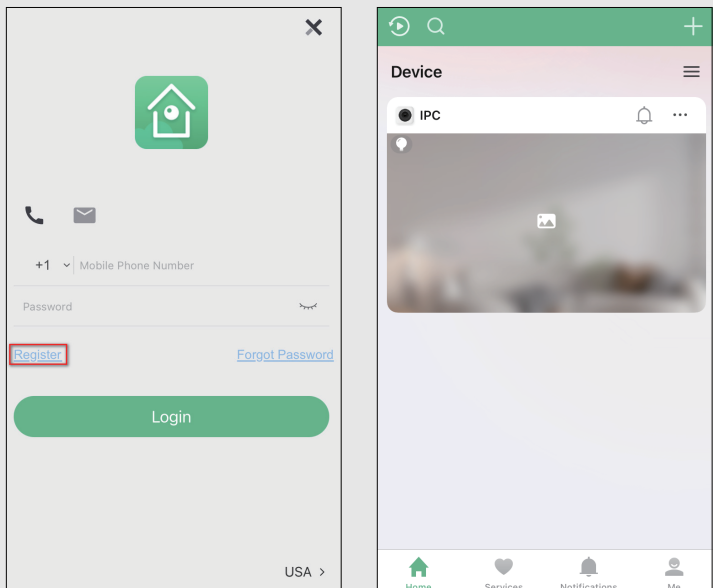
Figure 1-7-1: Android app



Figure 1-7-1: IOS app

⑤ open the mobile app. click Register, select a region, choose mobile registration or email registration, and fill in the correct verification code to automatically log in.

⑥ after registration,Click"+" to add a device,scan the QR code of the device body. enter the device verification code, Enter the device name.Clicking the device to watch the video.



The camera can work with Hikvision **POE NVR**,Plug and Play, besides,the **IP** camera also supports standard **ONVIF** protocol ,which can be added to third-party video recorder easily with **ONVIF**.

When connecting to a third-party brand NVR, you need to manually enable the ONVIF function on the web page of the camera.

Note:

- ① Before connecting cameras to NVR that has POE switch ,make sure the NVR and cameras have valid IP scheme that matches each other. (e.g.: Dahua NVR POE Port's IP Network Segment is 10. 1. 1.XX, so the camera IP must be 10. 1. 1.XX)
- ② Before connecting cameras to NVR that has no POE switch, Make sure the NVR and the camera are on the same network segment. (e.g.: POE switch router router's IP is 192.168.1.1, so the camera IP must be 192.168.1.XX)
- ③ Some POE NVR models support plug and play (such as Hikvision POE NVR) , if the "Plug & Play" feature is not available or not applicable, please add camera manually.

05

Frequently Asked Questions

5.1 Why can't I open the default IP address **192.168.1.64** via a web browser?

The default **IP** address may not match your LAN's **IP** segment. Check your computer's IP address before accessing the camera. If the **IP** address does not match the **192.168.1.x** segment, please install the **IP** search tool from the download

website to modify the camera's IP address. Make sure the IP address of the camera matches the LAN IP scheme. For example, if the your LAN is **192.168.0.A**, then set the IP camera to **192.168.0.B** and so on.

5.2 How to upgrade the IP camera ?

- ① Ask the supplier for the suitable firmware.
- ② You can use the web browser, search tool, or PC client to upgrade the camera.
- ③Go to the Configuration > System > Maintenance > Upgrade & Maintenance, click browse and select the firmware, then click the Upgrade button and wait for the operation to complete.

5.3 How to fetch the RTSP video stream and http snapshot?

The URL of Hikvision main stream H.264 is:
rtsp://admin:asd12345@192.168.1.64:554/h264/ch1/-main/av_stream

The URL of Hikvision sub stream H.265 is:
rtsp://admin:asd12345@192.168.1.64:554/h265/ch1/sub-/av_stream

5.4 Why does the NVR not show image after adding your IP camera ?

- ① Make sure you selected the right protocol and enter the correct username and password when adding the cameras.
- ② Make sure the NVR and IP camera are the same IP seament. (eg. NVR:**192.168.1.x**, and IP camera:**192.168.1.y**).
- ③ Try changing the camera encode mode to H.264 if the NVR can't support **H.265**. (Configuration → Camera → Video > Encode mode: **H.264**)

5.5 Forget Password

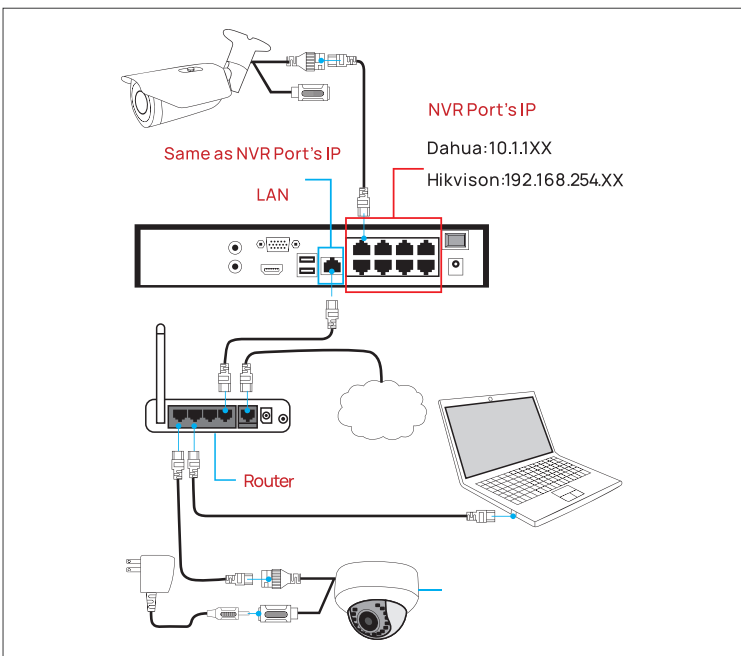
Steps: **Open SADP > Check the camera > Click Forget Password > Click "Export"** to export the file and send it to the after-sales personnel > Enter the key given by the after-sales service personnel > Enter a new password for the camera.

5.6 Reset camera

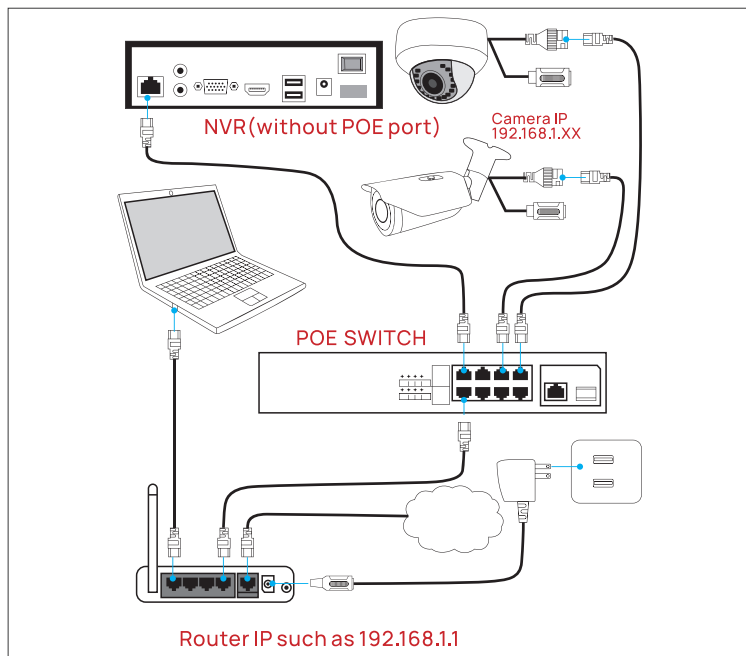
Reset the keyway on the camera housing, open the slot cover, and press and hold the reset key for 15s to restore the camera to the factory.

04

Camera Connection to NVR



POE port NVR



Without POE port NVR

VK Series POE IP Camera Quick Start Guide



<https://www.vikylin.com/>

NETWORK CAMERA QUICK GUIDE

Whatsapp: +1(203)677-0978
Email: global@vikylin.com
Facebook: VIKYLIN Technology



Facebook



Email



WhatsApp